



## RFID LABELS

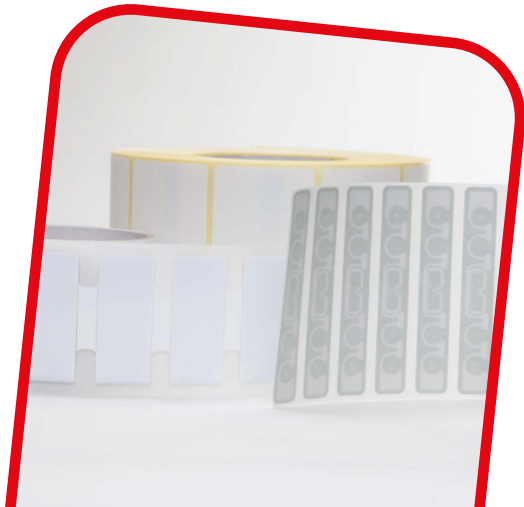
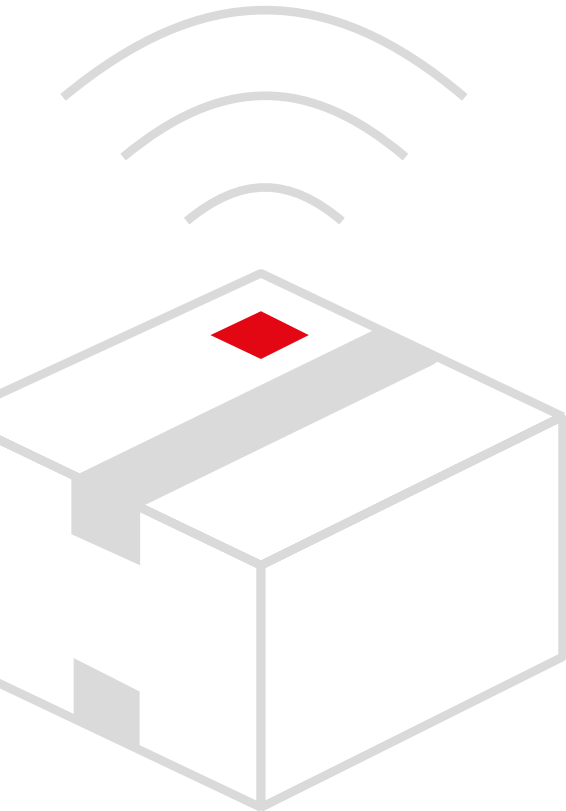
Visual and electronic information in one.



## PORTFOLIO OF RFID LABELS

Partex Labels offers a wide range of RFID labelling solutions for all types of applications that aim to improve your company's processes and operations efficiency, as well as their optimization.

This portfolio will introduce you to the world of RFID labelling and to the possibilities it offers, and will present the RFID labelling solutions offered by Partex Labels.

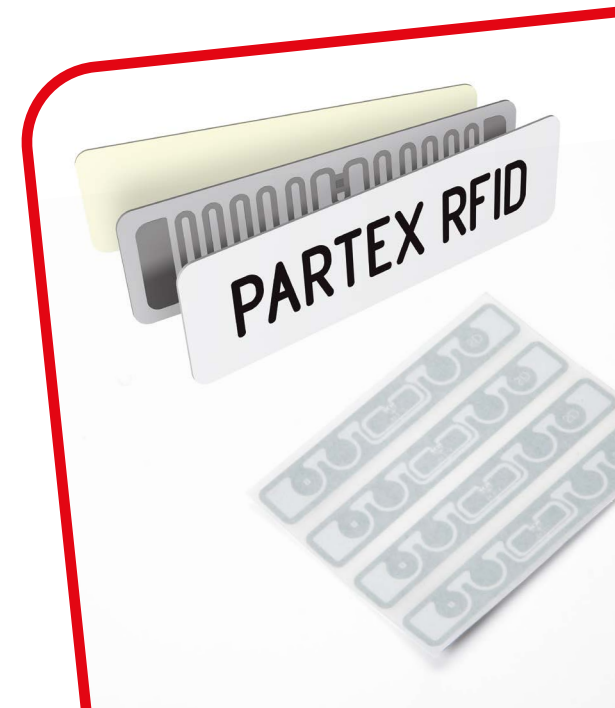
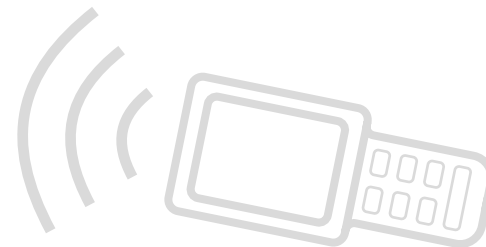


## WHAT EXACTLY IS RFID LABELLING?

RFID labelling utilizes labels with inbuilt microprocessors which can be encoded and the data can be read from a distance using a mobile or stationary RFID reader.

This solution enables multiple RFID labels to be read simultaneously without having to physically get close to the labels with the reader, which improves comfort and efficiency compared to some more traditional ways of writing data on labels, such as printing barcodes or QR codes.

In the case of most labels, it is also possible to update the encoded data using an RFID reader, so that the information which the label contains can be updated at any given time and according to the need, which isn't possible in the case of traditional labels printed with barcodes or QR codes.

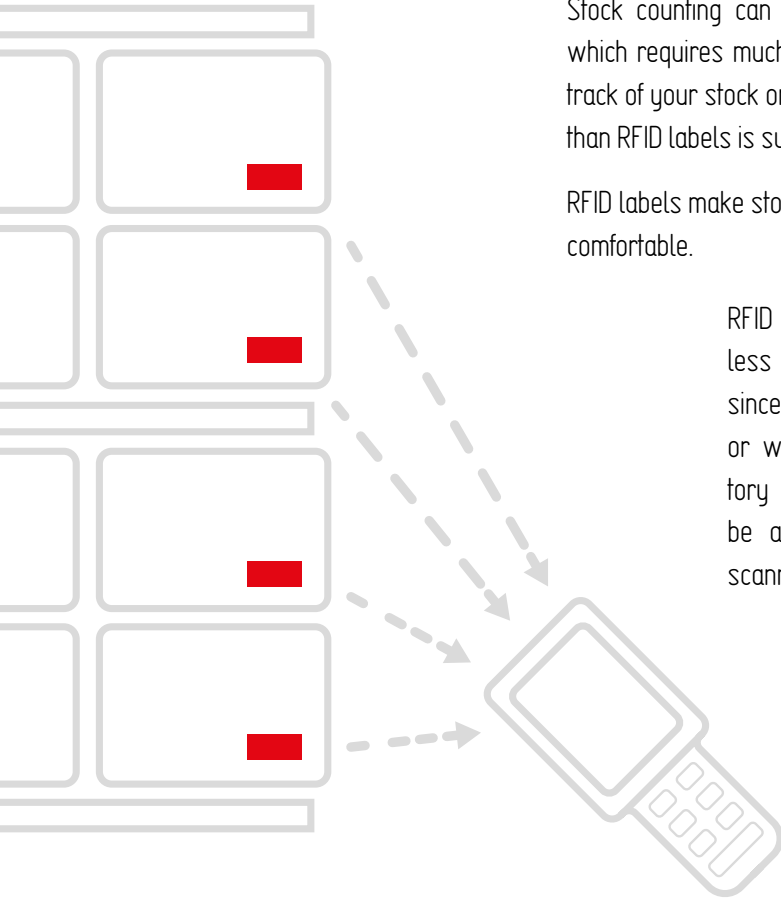


## RFID LABELS FOR STOCK COUNTING AND INVENTORY MANAGEMENT

Stock counting can be a very time consuming task which requires much planning and effort, and keeping track of your stock or inventory through any other way than RFID labels is sure to be a demanding undertaking.

RFID labels make stock counting much easier and more comfortable.

RFID stock counting solutions make it less likely that a mistake will happen, since now one doesn't have to scan or write down every piece of inventory separately, but many pieces can be automatically and simultaneously scanned from a distance.

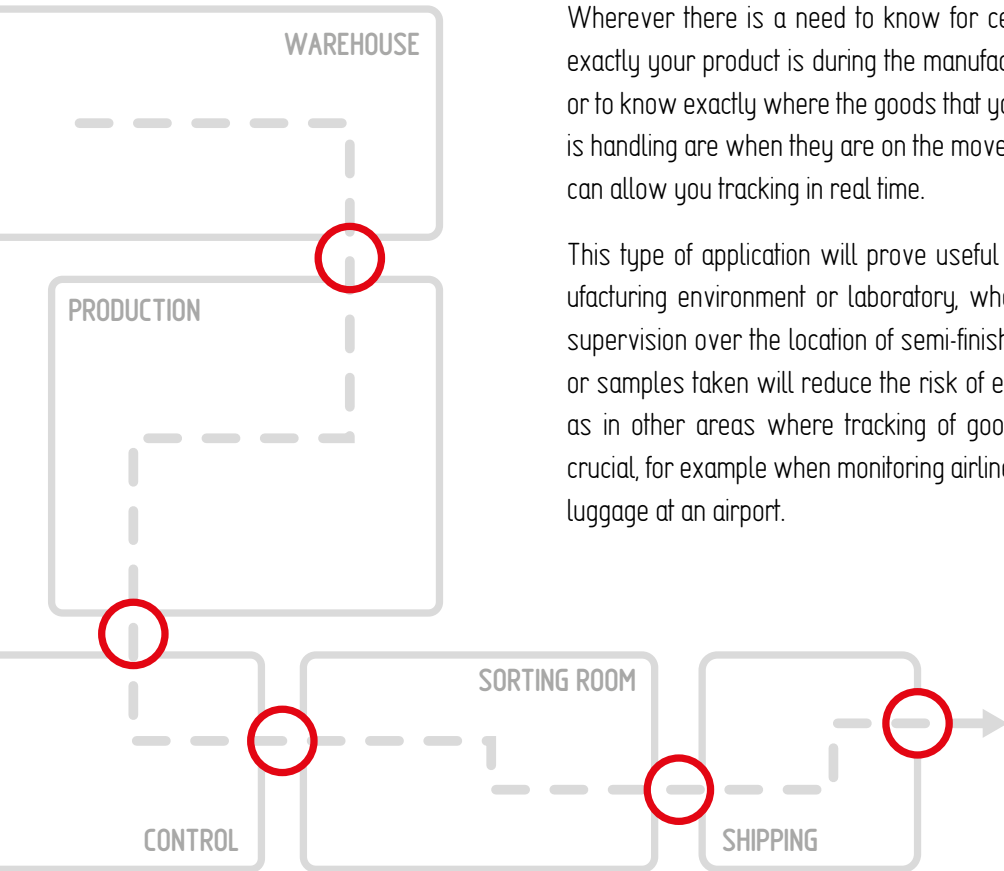


ITEM INFORMATION	PUT AWAY INFORMATION	SHIPPING INFORMATION
Quantity: 32	Putaway Location: A36-44B	Bin: 2
SKU: 20872 Handwork	Storage Location: A397-8234	Units per case: N/A
4387-602 Qty: 224	Special Considerations:	Units per pallet: 34

## TRACKING AND CONTROLLING GOODS WITH RFID SOLUTIONS

Wherever there is a need to know for certain where exactly your product is during the manufacturing cycle, or to know exactly where the goods that your company is handling are when they are on the move, RFID labels can allow you tracking in real time.

This type of application will prove useful in any manufacturing environment or laboratory, where constant supervision over the location of semi-finished products or samples taken will reduce the risk of error, as well as in other areas where tracking of goods becomes crucial, for example when monitoring airline customers' luggage at an airport.



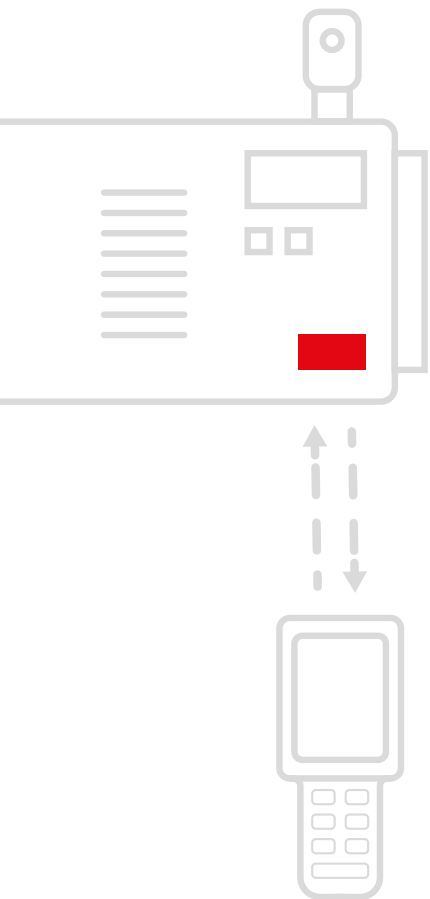
## LONG LASTING RFID IDENTIFICATION LABELS

For applications where a permanent, durable, and long lasting identification marking is required, there are RFID On-Metal labelling solutions available that provide a superior level of durability of the label, whilst enabling the encoding of the RFID label with an Electronic Product Code.

Highly advanced permanent RFID On-Metal Labels can be applied on any type of surface, from plastic, through to glass and metal, and ensure a high level of readability.

In the case of the RFID labels which are equipped with a chip containing User Memory, apart from the ability to encode the Electronic Product Code there is also a major advantage of being able to encode additional data defined by the user that can be encoded but also overwritten, which is not something that other types of permanent markings, such as traditional printed labels or rating plates, would allow.

The ability to encode additional data proves especially useful when your part or machine needs to be tested and approved every so often, as the information about the next technical control can be encoded in your RFID label.



## RFID SUPPLIES - LABELS



Partex Labels' main focus has always been on manufacturing and delivering high quality labels for industry, therefore in line with our profile and expertise we can offer your company RFID labels printed and encoded according to your project, which are ready to use.

Available Zebra RFID labels are listed in the tables opposite, but we are always happy to advise you and recommend the labels which will work best for your application.

We also offer a wide range of Zebra printers, readers and mobile RFID terminals.

### General purpose RFID labels

For non-metallic surfaces. Read range up to 17m in open space.

SIZE [mm]	MATERIAL	ADHESIVE	CHIP	EPC MEMORY (BITS)	USER MEMORY (BITS)
25 x 15	White polypropylene	Permanent	UCODE 8	128	0
44 x 19	White polyester	Permanent	UCODE 8	128	0
54 x 34	White DT paper	Permanent	UCODE 9	96	0
70 x 24	White TT paper	Permanent	UCODE 9	96	0
76 x 25	White polypropylene	Permanent	UCODE 9	96	0
102 x 25	White TT paper	Permanent	UCODE 8	128	0
102 x 76	White TT paper	Permanent	UCODE 8	128	0
102 x 152	White DT paper	Permanent	UCODE 9	96	0

### Advanced RFID labels

For non-metallic surfaces. Read range up to 20m in open space.

SIZE [mm]	MATERIAL	ADHESIVE	CHIP	EPC MEMORY (BITS)	USER MEMORY (BITS)
102 x 51	White TT paper	Permanent	UCODE 8	128	0
102 x 51	White TT paper	Permanent	UCODE 9	96	0
102 x 152	White TT paper	Permanent	UCODE 8	128	0
102 x 152	White TT paper	Permanent	UCODE 9	96	0

### On-Metal RFID labels

For metallic surfaces but work on any surface. Durable RFID labels. Read range up to 15m.

SIZE [mm]	MATERIAL	ADHESIVE	CHIP	EPC MEMORY (BITS)	USER MEMORY (BITS)
45 x 13	White polyester	High performance permanent	Monza R6P	128/96	32/64
60 x 25	White polyester	High performance permanent	M780	496	128
100 x 13	White polyester	High performance permanent	Monza R6P	128/96	32/64
100 x 40	White polyester	High performance permanent	M730	128	0



If you are interested in improving your company's daily operations and the efficiency of your processes through our RFID labelling solutions, please contact our Headquarters or one of our Sales Representatives directly.

#### **Headquarters**

PARTEX LABELS SP. Z O.O.  
ul. Bolesława Chrobrego 129  
87-100 Toruń, Poland  
info@partextlabels.com  
Tel: +48 56 6506540

#### **Sales**

sales@partextlabels.com  
Tel: +48 56 6506544

#### **Production and technical support**

slawomir.czerw@partextlabels.com  
mikolaj.nowakowski@partextlabels.com  
Tel: +48 56 6506543

[www.partextlabels.se](http://www.partextlabels.se)